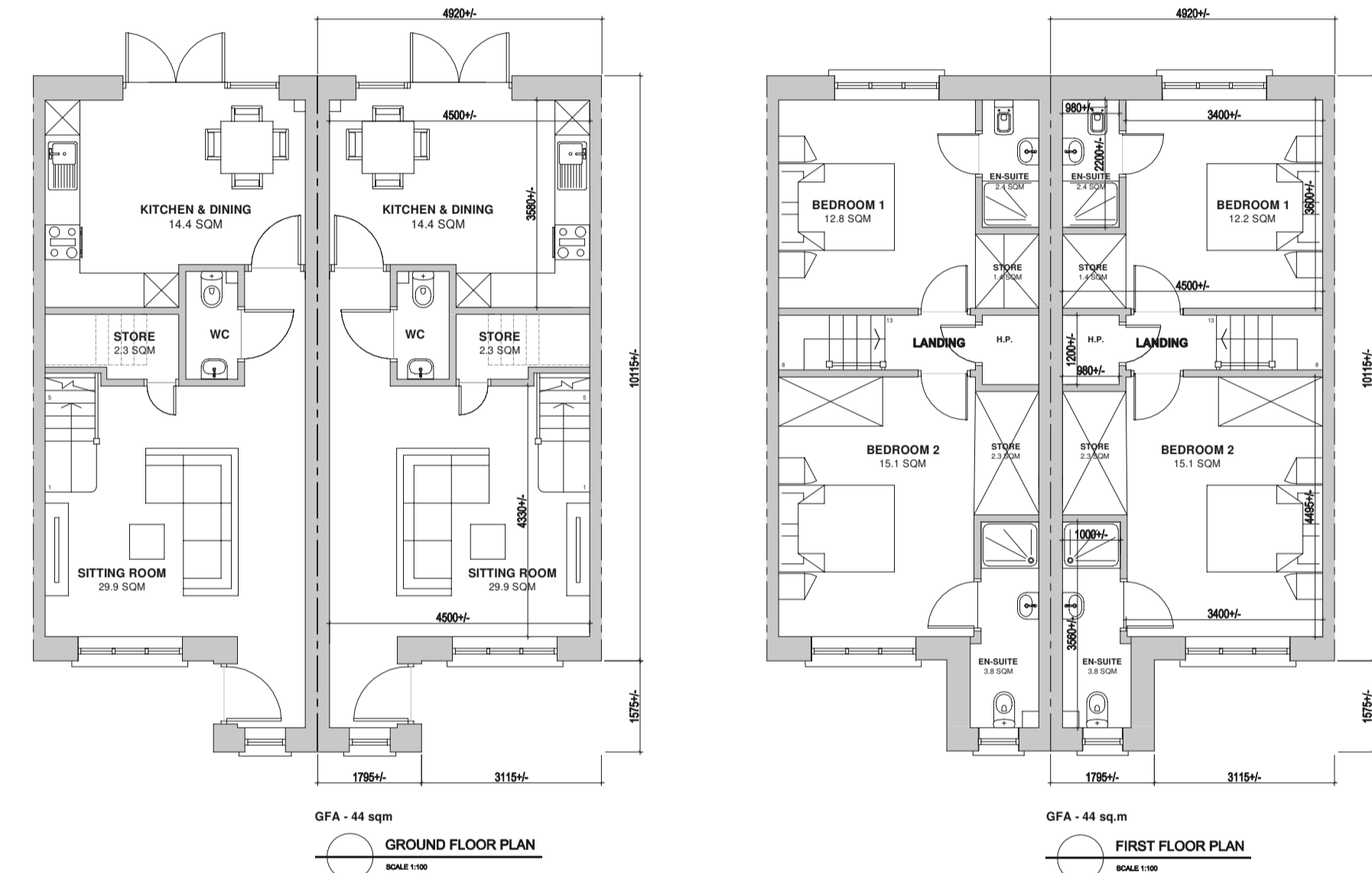
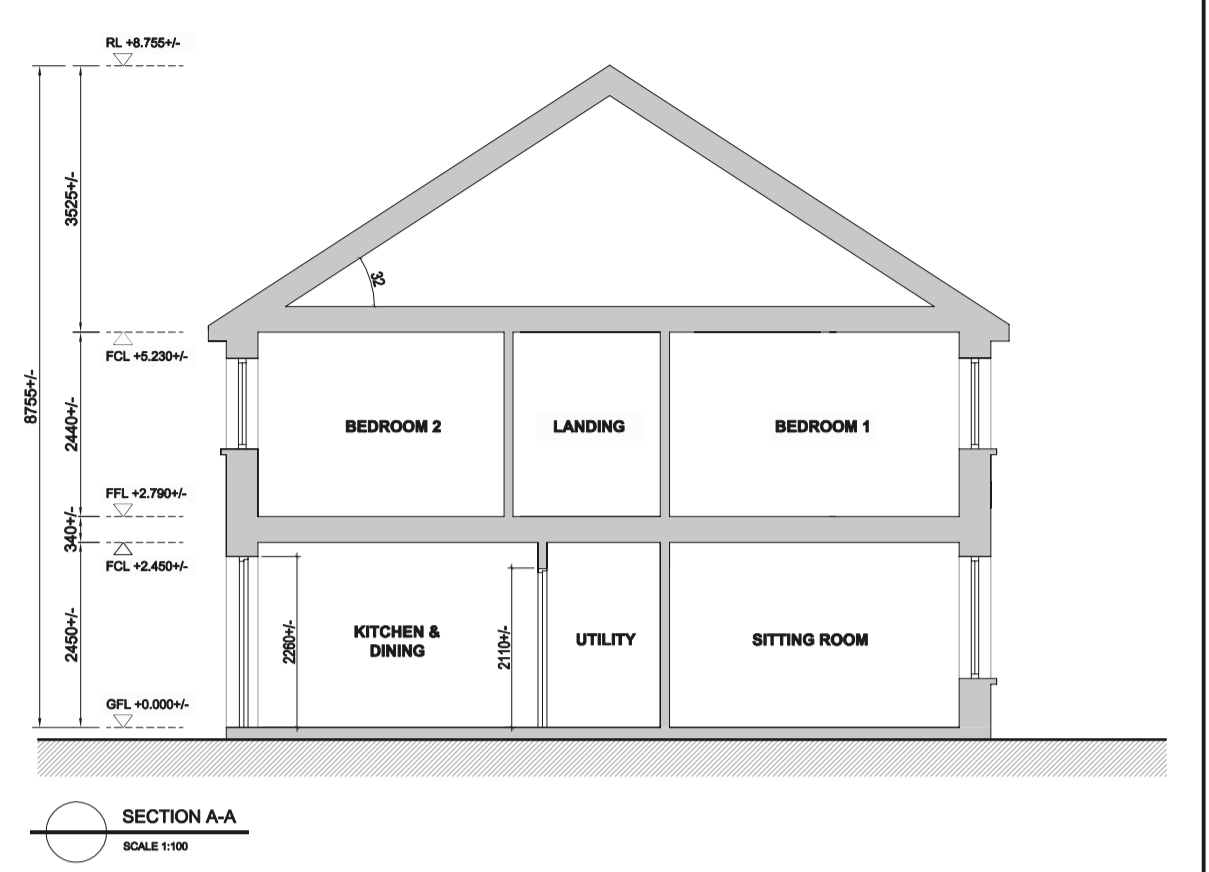


House Type D5: 3 bed unit Mid Terrace

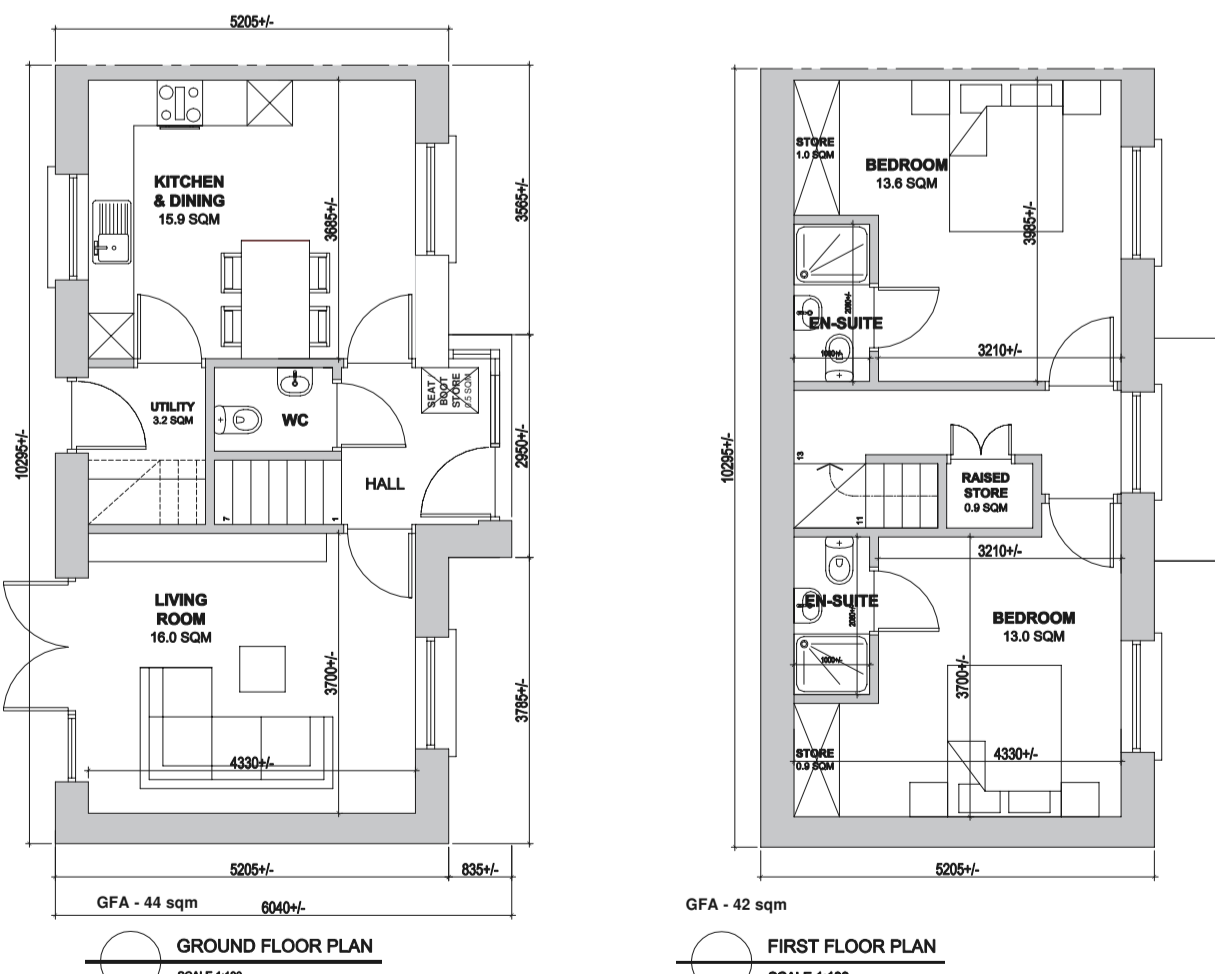


House Type E3: 2 bed unit Mid terrace

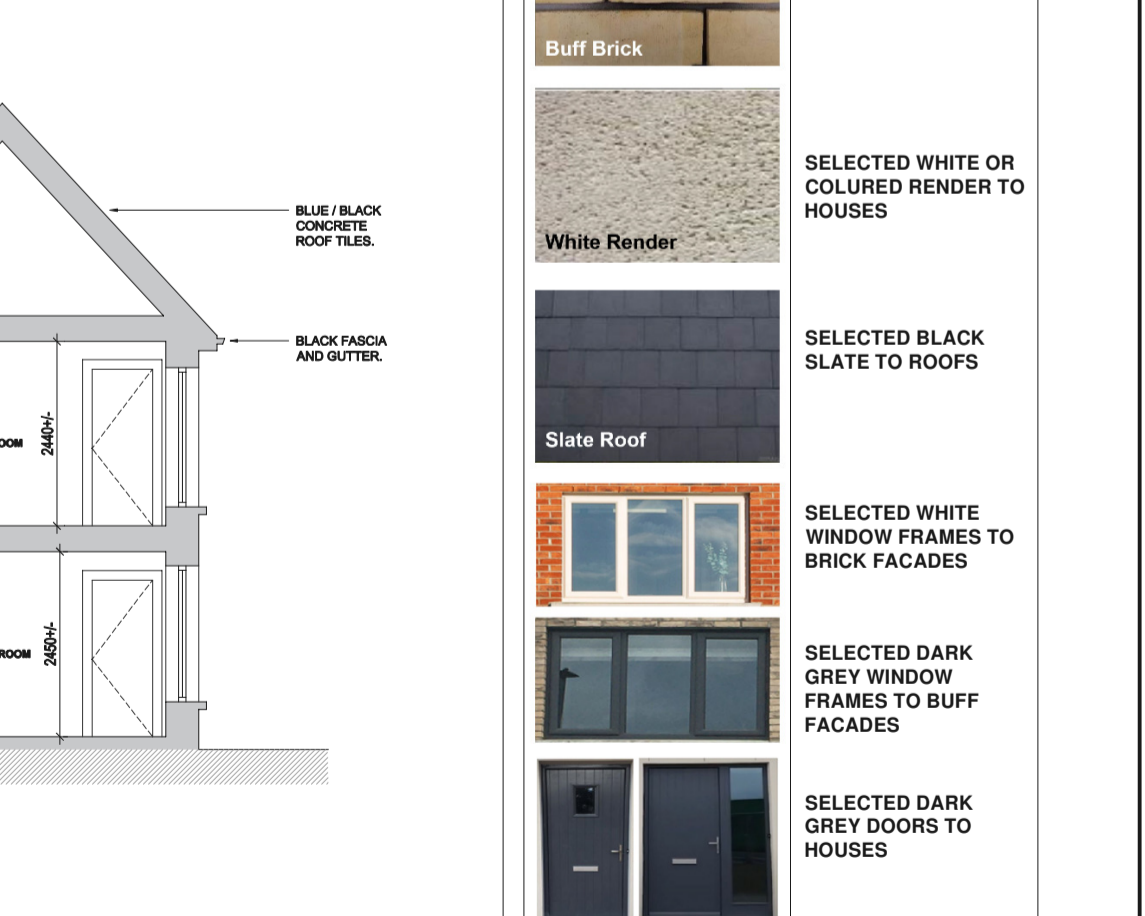
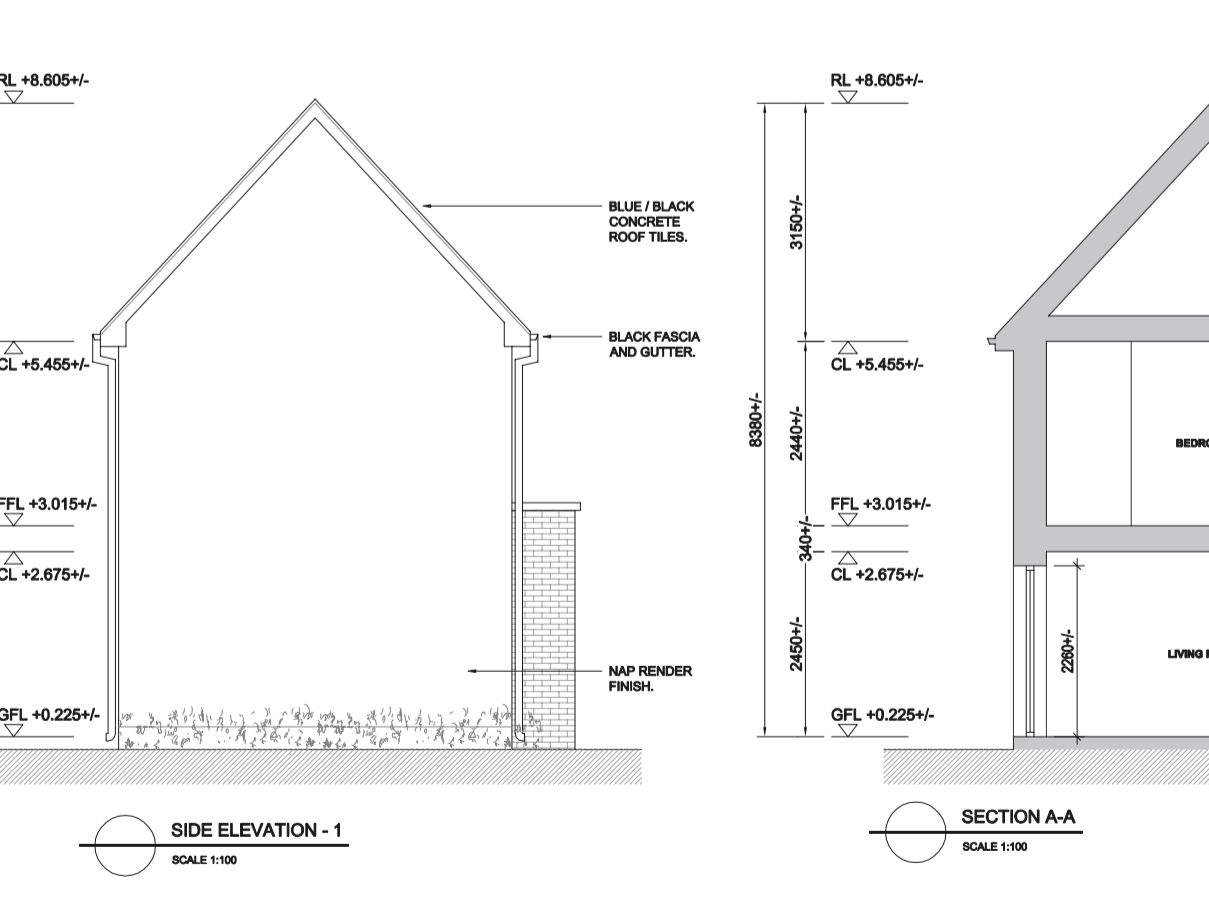
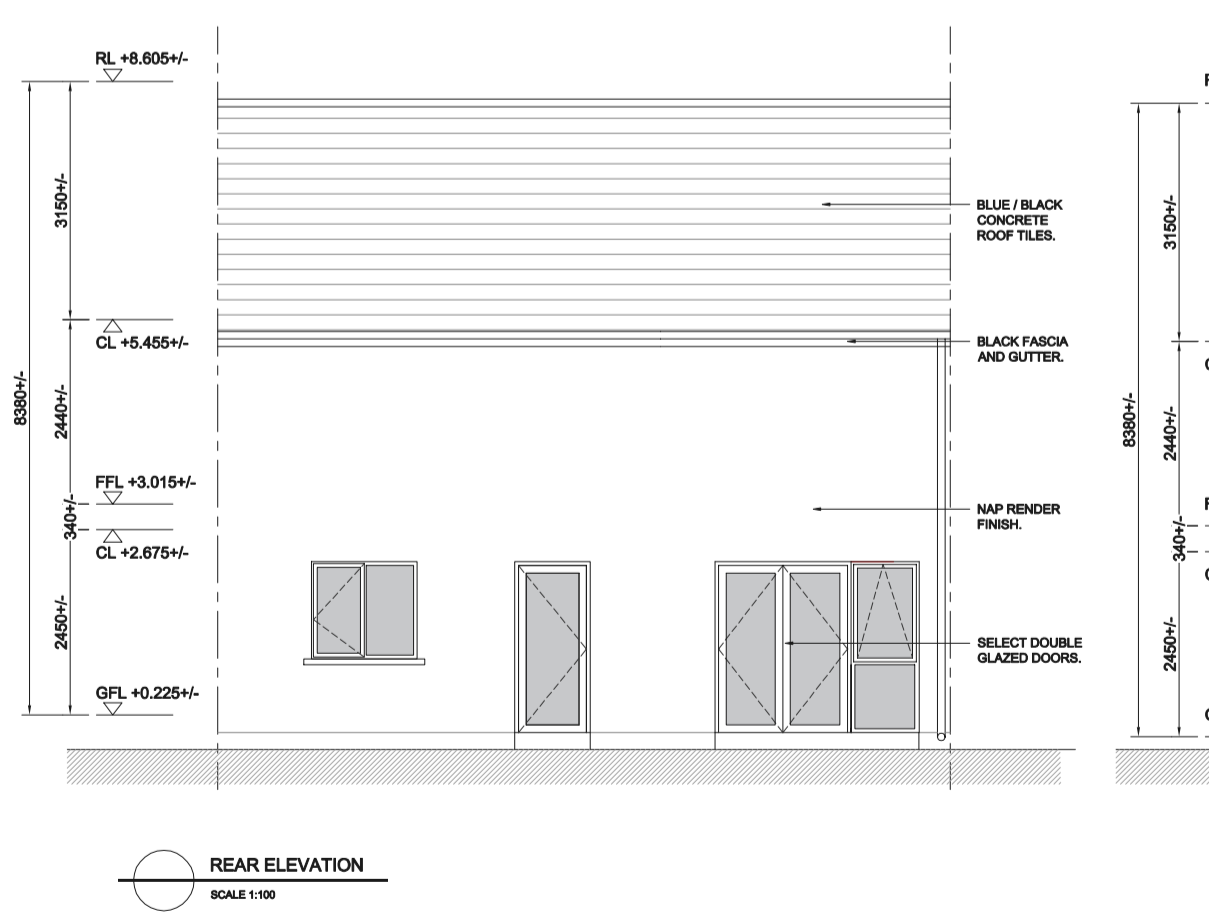
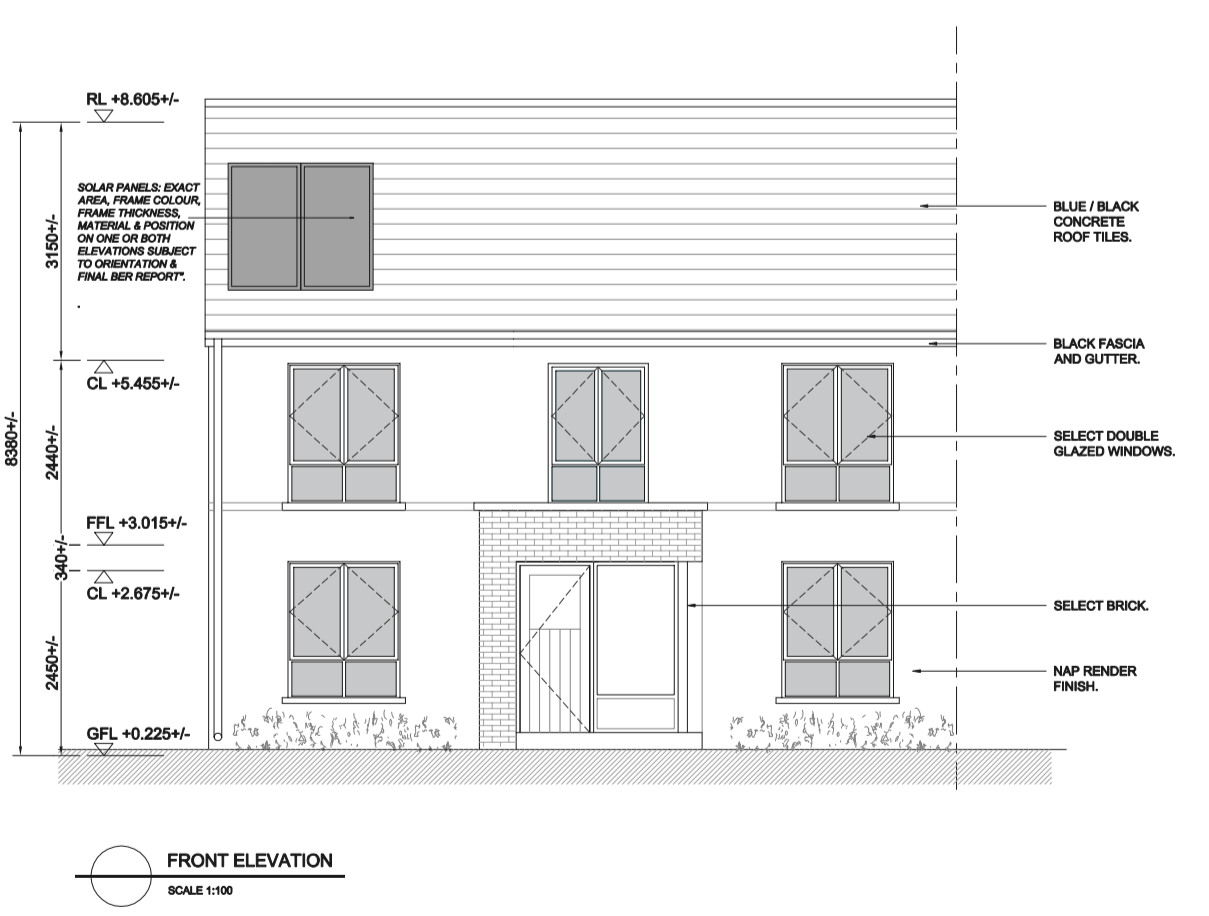


TYPICAL FACADE MATERIAL

- SELECTED RED BRICK TO HOUSES
- SELECTED BUFF BRICK TO HOUSES
- SELECTED WHITE OR COLOURED RENDER TO HOUSES
- SELECTED BLACK SLATE TO ROOFS
- SELECTED WHITE WINDOW FRAMES TO BRICK FACADES
- SELECTED DARK GREY WINDOW FRAMES TO BUFF FACADES
- SELECTED DARK GREY DOORS TO HOUSES



House Type E6: 2 bed unit End of terrace



NOTES:
Check all dimensions on site. Do not rely on scaled dimensions. This drawing must be read in conjunction with all relevant contract documents.

NOTE:
FOR PROPOSED SITE LEVELS AND HOUSE TYPE ORIENTATION REFER TO DRAWINGS CBR-MCA-00-00-DR-A-1001.
FOR PROPOSED HOUSE TYPE LOCATION AND MIX, REFER TO DRAWINGS CBR-MCA-00-00-DR-A-1002.

Rev	Date	Description	Drwn	Chkd	Rev	Date	Description	Drwn	Chkd
					P02	18.02.22	ISSUED FOR PLANNING APPLICATION	BH	GM

Architecture • Interior Design • Masterplanning • Project Management

MCA ARCHITECTS

4 Fenover Wharf, Asgard Road, Dublin 2, Ireland. D02 X039
+353 1 6760916 info@mca.ie www.mca.ie

Client: GLENVEAGH HOMES LTD
Project: SHACKLETON ROAD HOUSING BALLYMAKEALY UPPER, CELBRIDGE Co. KILDARE
Drawing: PROPOSED HOUSE TYPE DRAWINGS 2 BED AND 3 BED HOUSES SHEET 3
Status: FOR INFORMATION
Drawing: CBR - MCA - 00 - 00 - DR - A - 1016

Job No.: 2020.49
Sheet: A1
Scale: 1:100
Status Code:
S2

Revision: P02