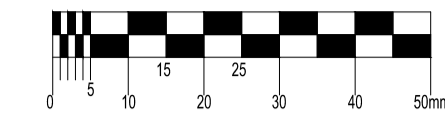
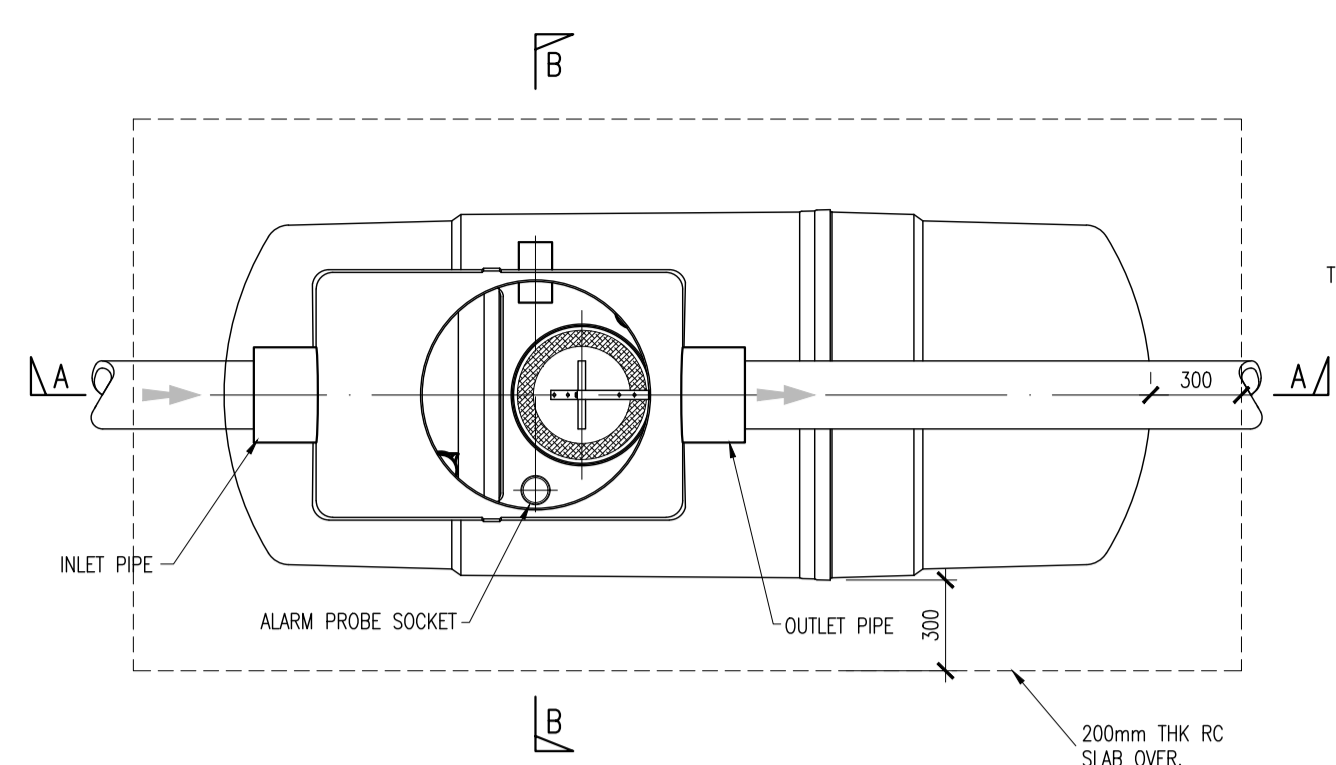
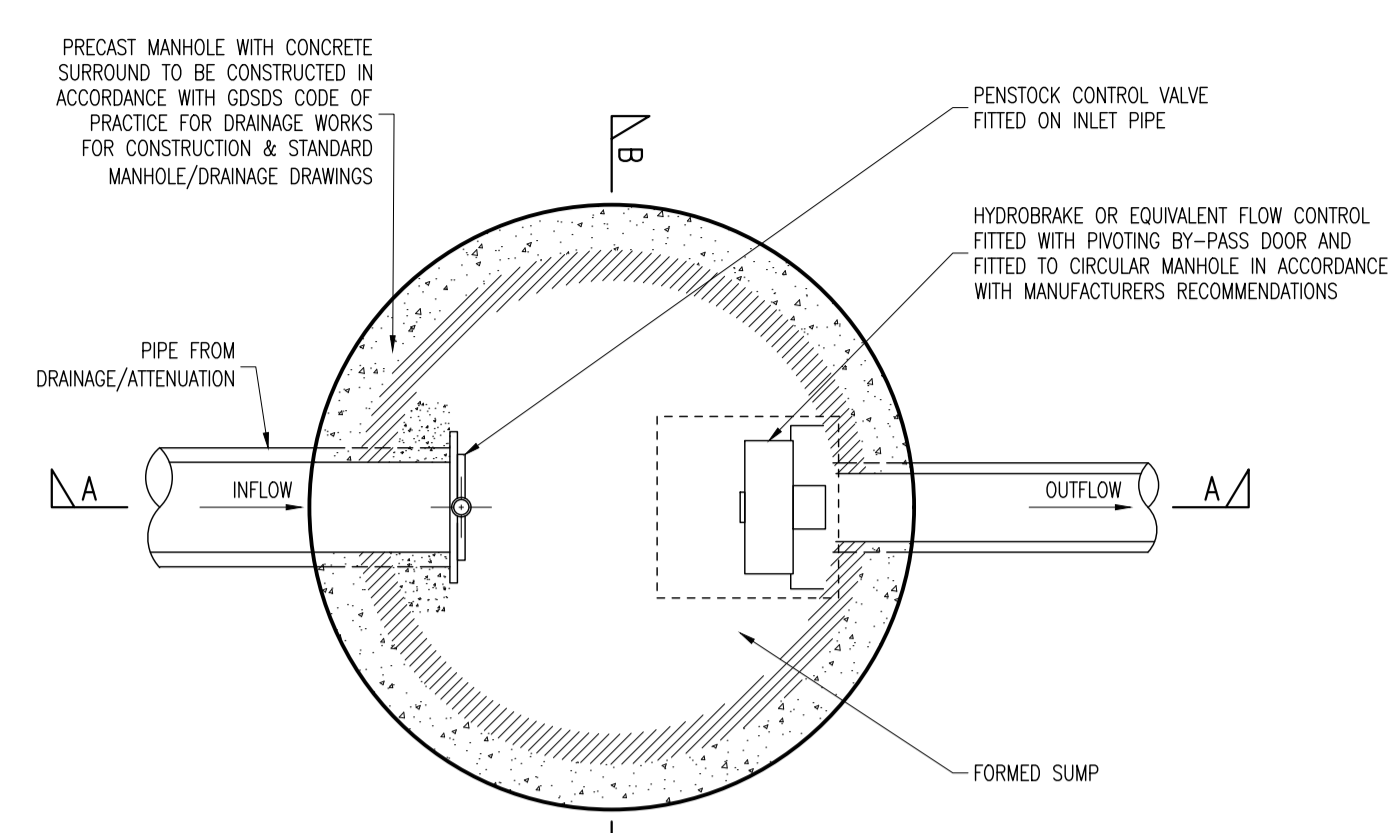


ON ORIGINAL



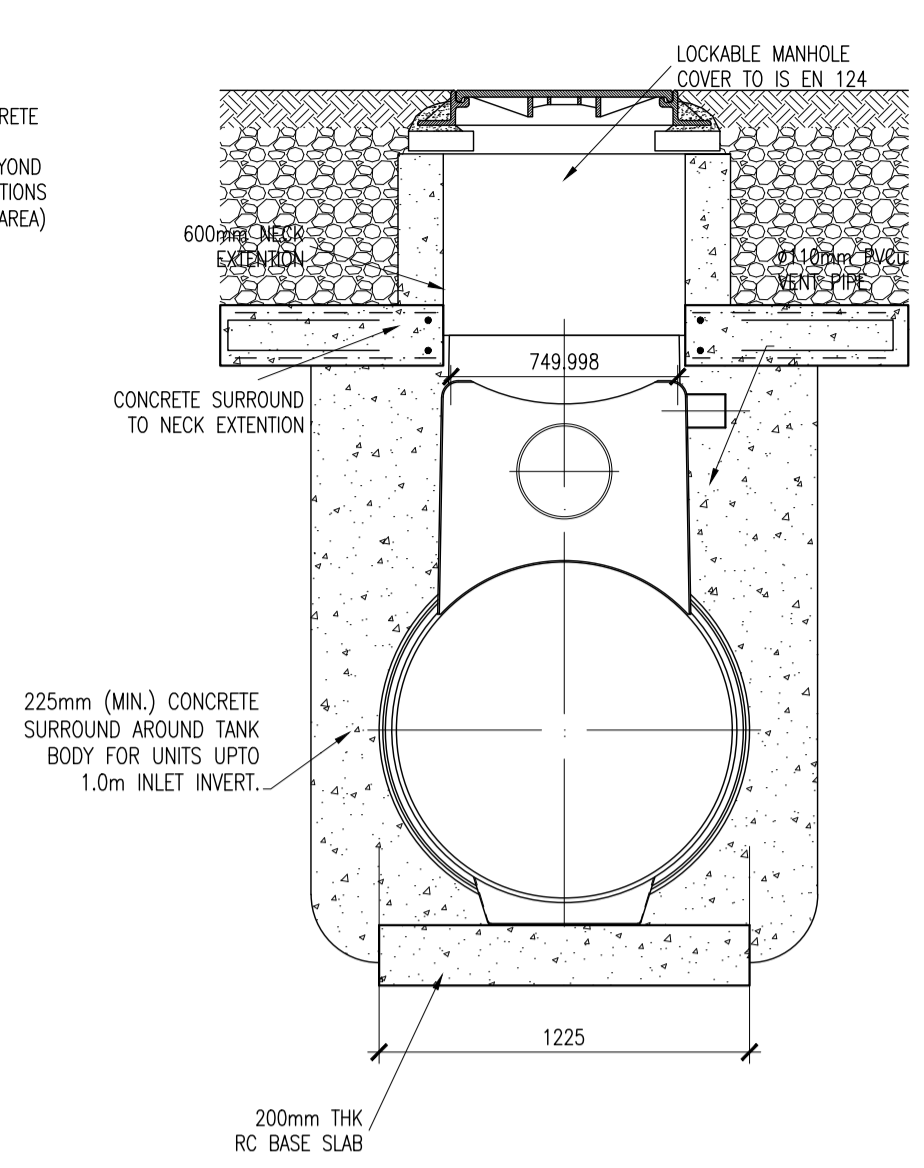
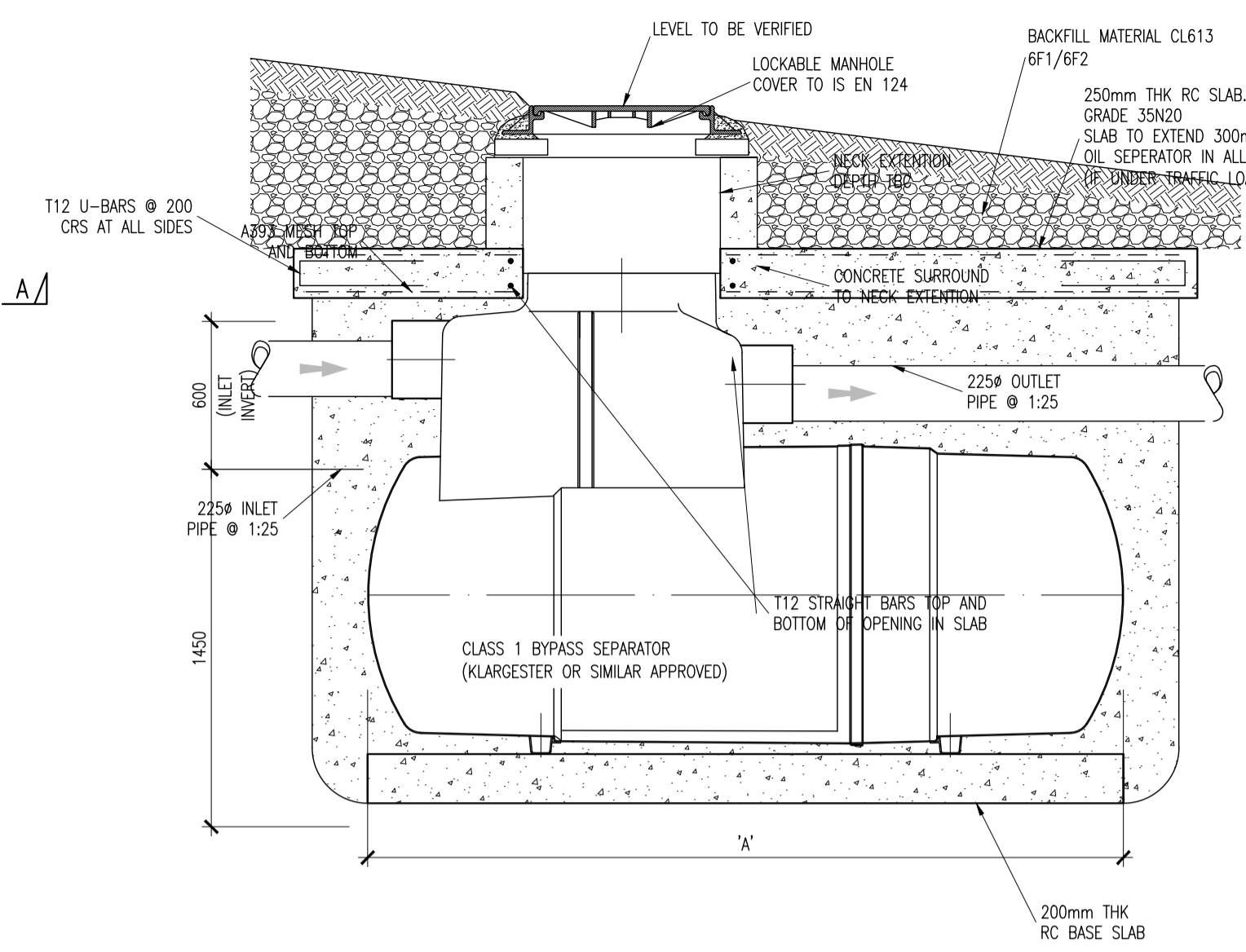
NOTES:

1. WATERMAIN TO BE 150/100mm DIA. PVC-A TO BS PAS27 (MIN. 10 BAR) EXCEPT UNDER ROADWAYS WHERE DUCTILE IRON IS TO BE USED.
2. AT 90 DEG. TURNS USE 2 No. 45 DEG. BENDS.
3. MINIMUM COVER TO WATERMAIN TO BE 900mm.
4. SPIGOT SOCKET CONNECTIONS TO BE USED AT PVC-A/DUCTILE IRON JUNCTIONS.
5. ANCHOR BLOCKS TO BE POSITIONED AT DEAD ENDS, TEES, BENDS AT EACH SIDE OF HYDRANTS AND VALVES.
6. HYDRANT OUTLET TO BE 200mm BELOW GROUND LEVEL UNLESS REQUESTED OTHERWISE.
7. HYDRANTS SHALL BE MANUFACTURED IN ACCORDANCE WITH BS 750: 2008 TYPE 2 AND SHALL INCORPORATE A SCREWDOWN VALVE, UNDERGROUND "GUIDE IN LOAD" TYPE WITH BAYONET LEG OUTLETS AND FABE SPINDLE CAP OF CAST IRON AND IRON CHAIN. HYDRANT VALVE SHALL BE "ANTI CLOCKWISE OPENING".
8. SLUICE VALVES SHALL COMPLY WITH THE REQUIREMENT OF BS5163. THEY SHALL "CLOSE BY TURNING ANTI CLOCKWISE".
9. VALVES AND HYDRANTS WHEN INSTALLED SHALL BE COVERED WITH APPROVED HEAVY DUTY METAL SURFACE COVERS. THESE COVERS MUST CONFORM WITH THE LOCAL AUTHORITY SPECIFICATIONS. COVERS TO BE HEAVY DUTY METAL COVERS TO IS EN 124.
10. INDICATOR PLATES SHALL CLEARLY IDENTIFY HYDRANT, AIR VALVE AND SLUICE VALVE LOCATIONS AND BASE BOARD LOCATIONS SHALL BE APPROVED BY THE LOCAL AUTHORITY. FIXED LETTERINGS SHALL COMPLY WITH BS3251. BACKGROUND COLOUR YELLOW TEXT COLOUR BLACK.
11. DRAINAGE MUST BE PROVIDED TO ENSURE THAT THE CHAMBERS CANNOT BE FLOODED WITH SURFACE OR GROUND WATER.
12. ALL SERVICE PIPES, CONNECTIONS AND WATER CONTROL UNITS SHALL BE AS PER OVERSEEING LOCAL AUTHORITY REQUIREMENTS.
13. ALL WATERMANS SHALL BE TESTED IN ACCORDANCE WITH SPECIFICATION & LOCAL OVERSEEING AUTHORITIES GUIDELINES FOR DRINKING WATER SUPPLY.
14. CONNECTION TO EXISTING WATERMAIN TO BE CO-ORDINATED WITH LOCAL OVERSEEING AUTHORITY.
15. CONTRACTOR TO LIASE WITH LOCAL OVERSEEING AUTHORITY FOR TESTING CLEANSING AND STERILISATION OF NEW WATERMANS.

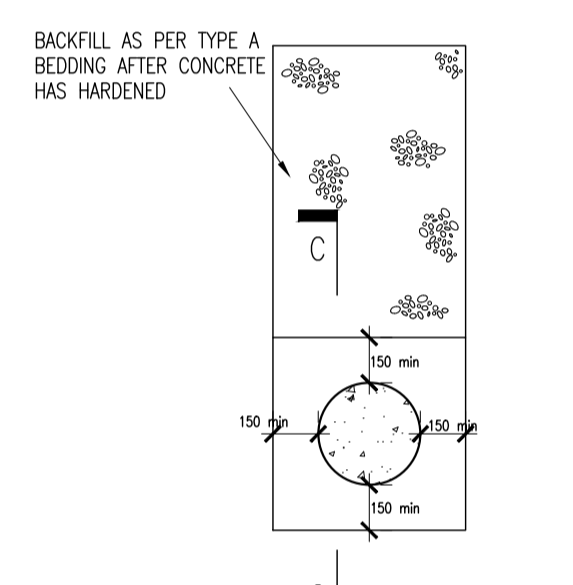
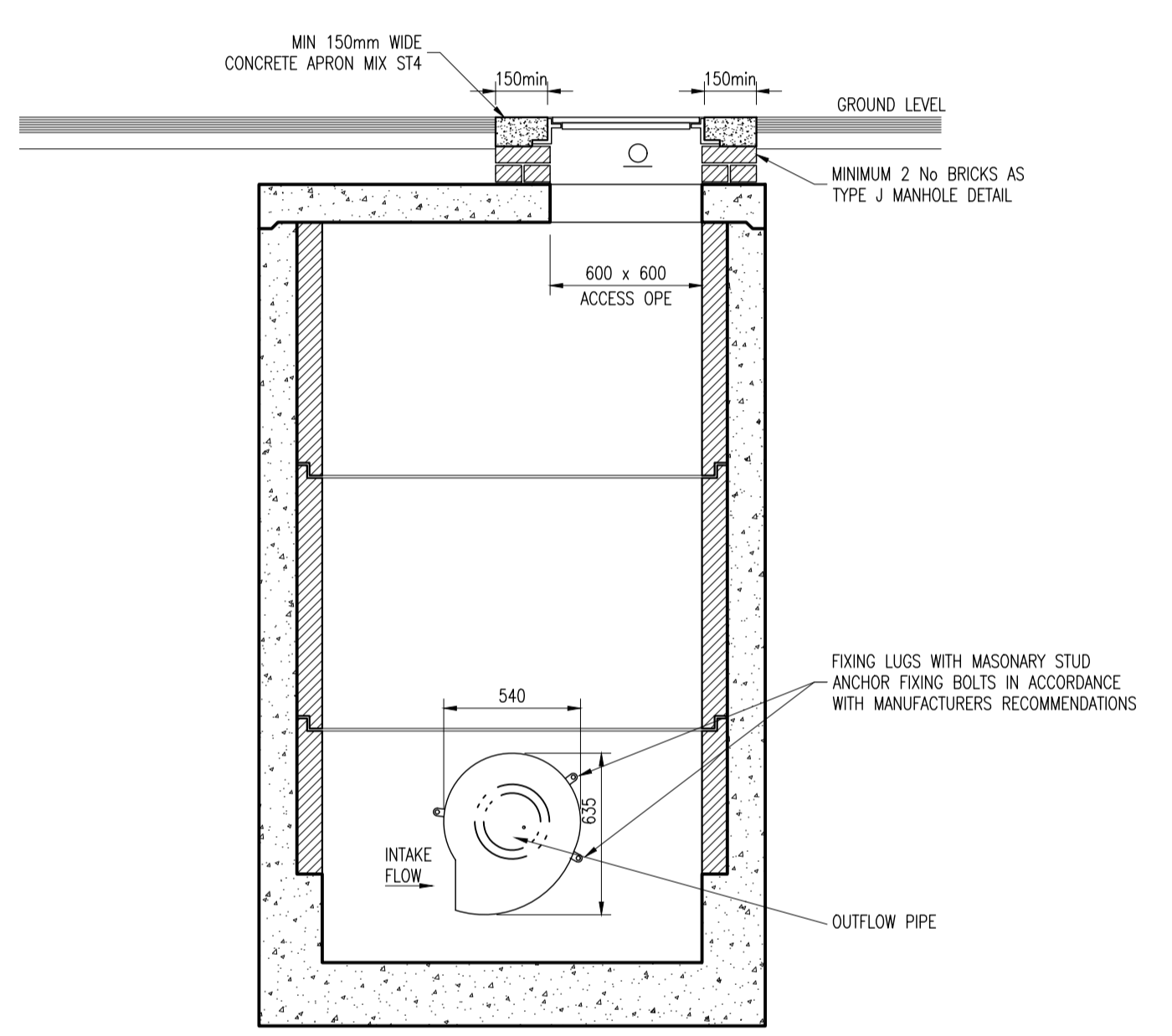


DIMENSIONS

UNIT REF No.	NOMINAL FLOW	LENGTH	DIAMETER	STD. PIPE Ø	APPROX. EMPTY WEIGHT (KG)	FALL ACROSS UNIT
NSBP006	6 L/S	1700	1350	160	160	100
NSBP015	15 L/S	2947	1220	315	240	100

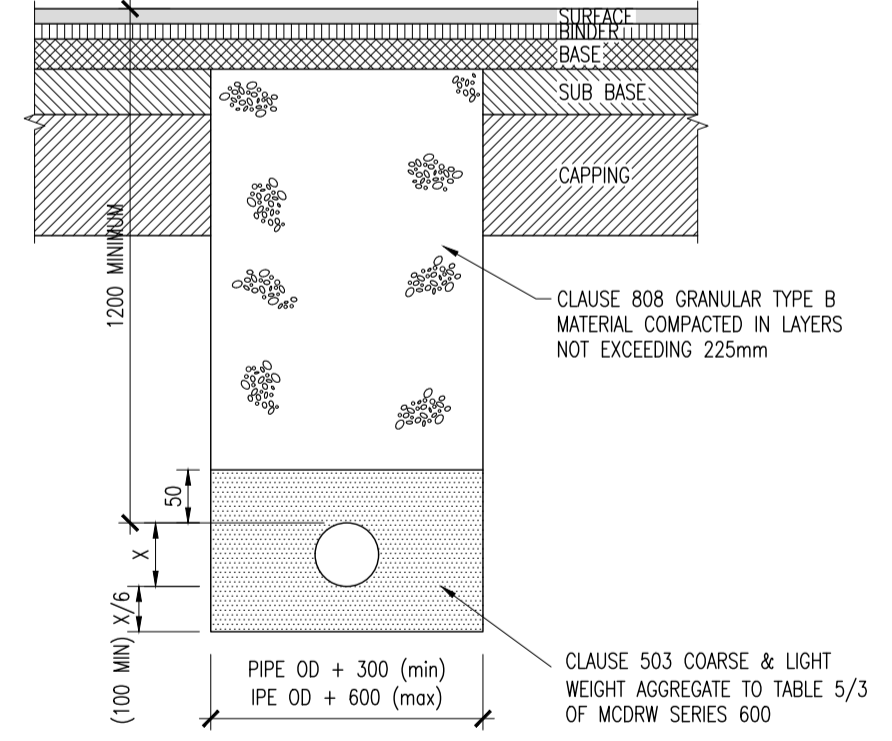
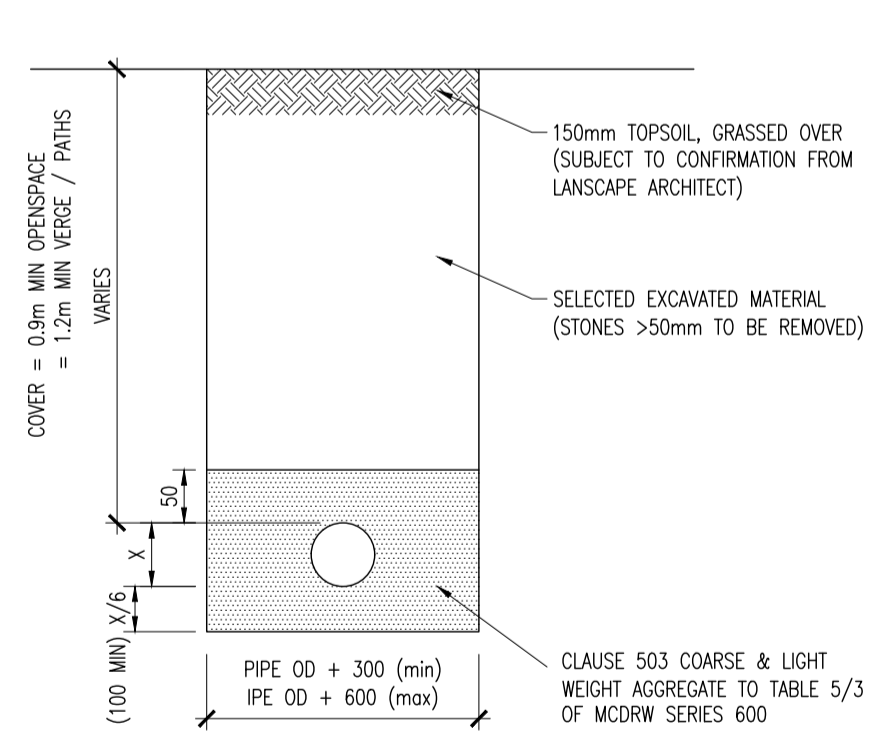
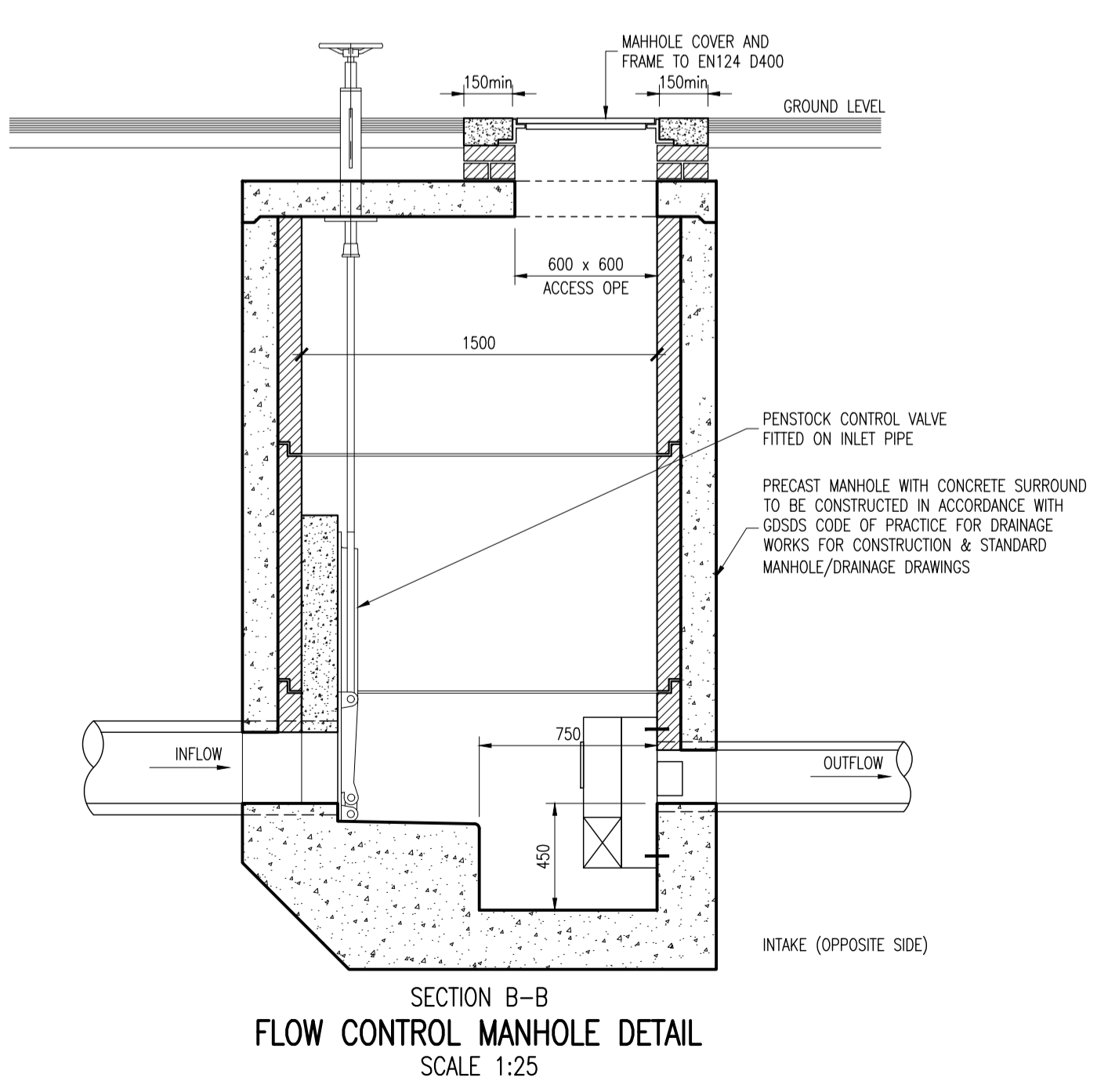
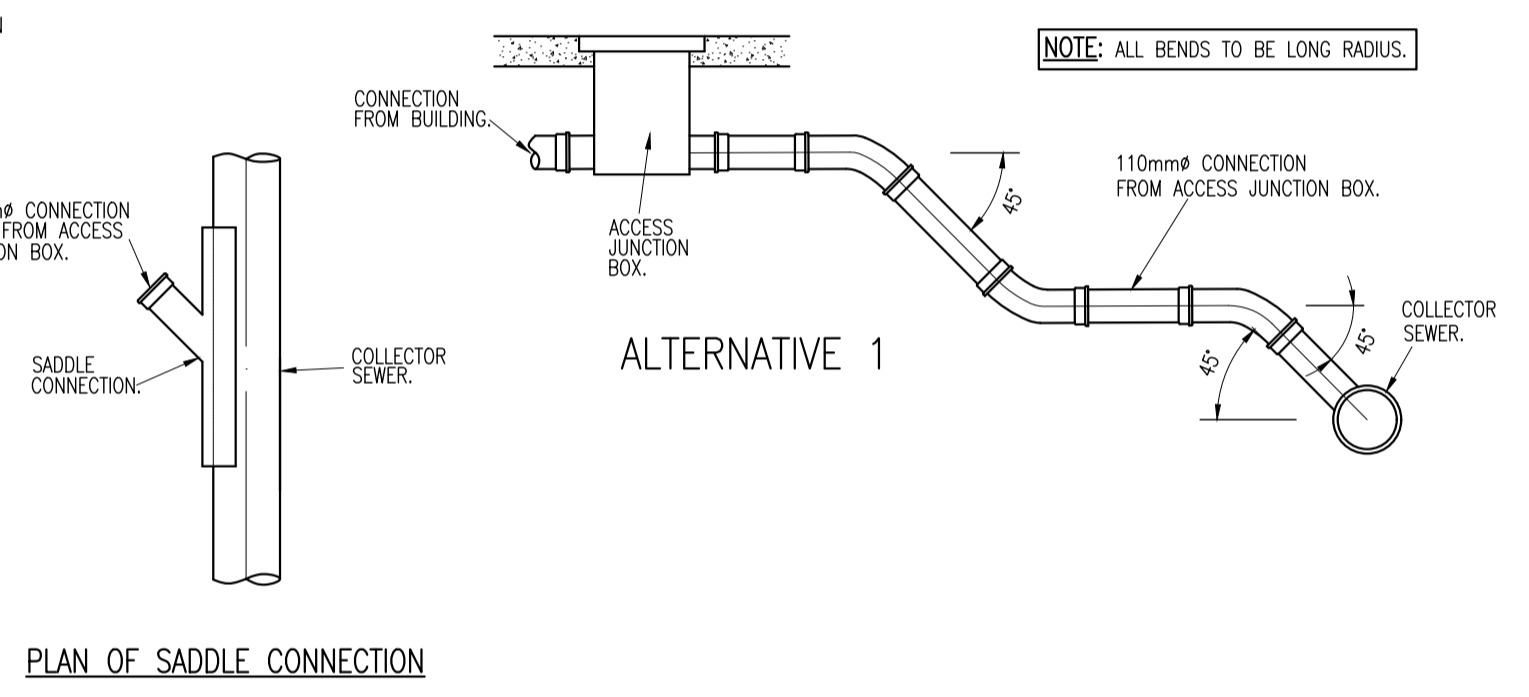
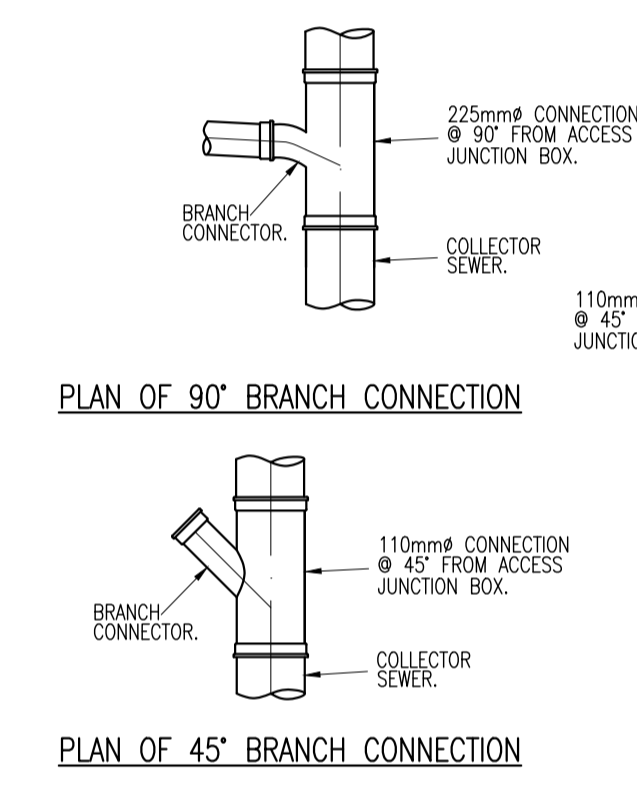


PETROL INTERCEPTOR DETAIL SCALE 1:25



CONCRETE BEDDING TO BE USED WHERE COVER LESS THAN 1.2m AND / OR AS DIRECTED BY THE ENGINEER (REFER TO LONGITUDINAL SECTIONS)

TYPE Z CONCRETE BEDDING/SURROUND (COVER 750mm - 1200mm)

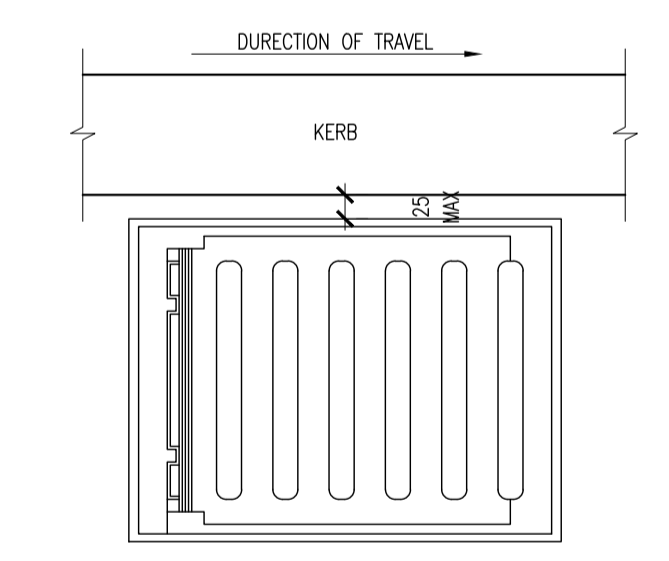


- NOTES:
1. ALL DIMENSIONS ARE IN MILLIMETRES.
 2. DIMENSION X IS THE EXTERNAL DIAMETER OF THE PIPE (Ø225 = 301mm, Ø450 = 588mm & WIDER AT SOCKETS).
 3. THE MINIMUM AND MAXIMUM WIDTH OF THE TRENCH APPLIES ON AND BELOW A LINE 300mm ABOVE THE OUTSIDE TOP OF THE PIPE. ABOVE THE 300mm LINE THE TRENCH BACKFILL MATERIAL SHALL BE AS PER TYPICAL TRENCH DETAILS.
 4. BEDDING TO BE COMPACTED IN ACCORDANCE WITH SPECIFICATION & MANUFACTURERS RECOMMENDATIONS

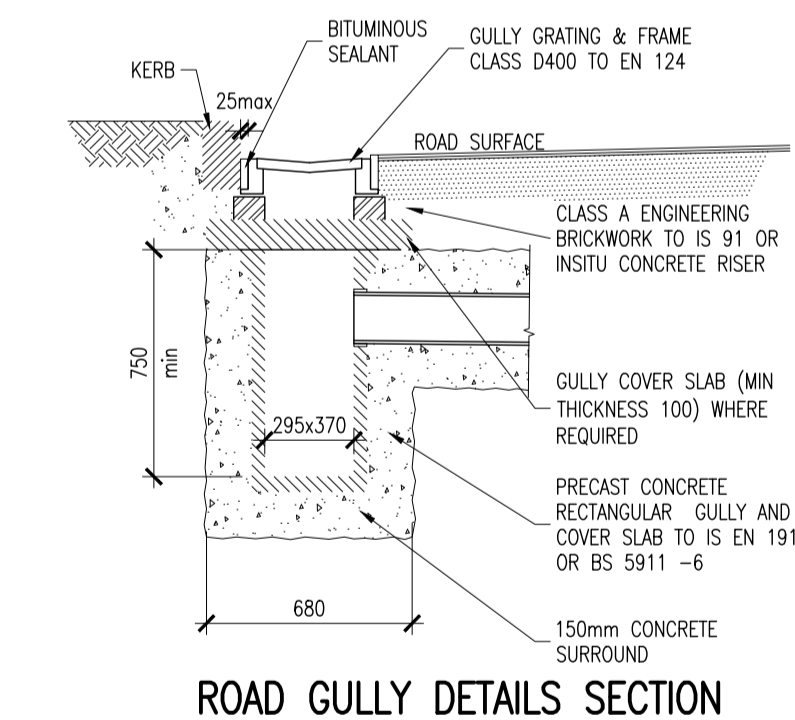
TYPE S (COVER > 1.2 METRES TO CROWN)

PIPE BEDDING DETAILS SCALE 1:25

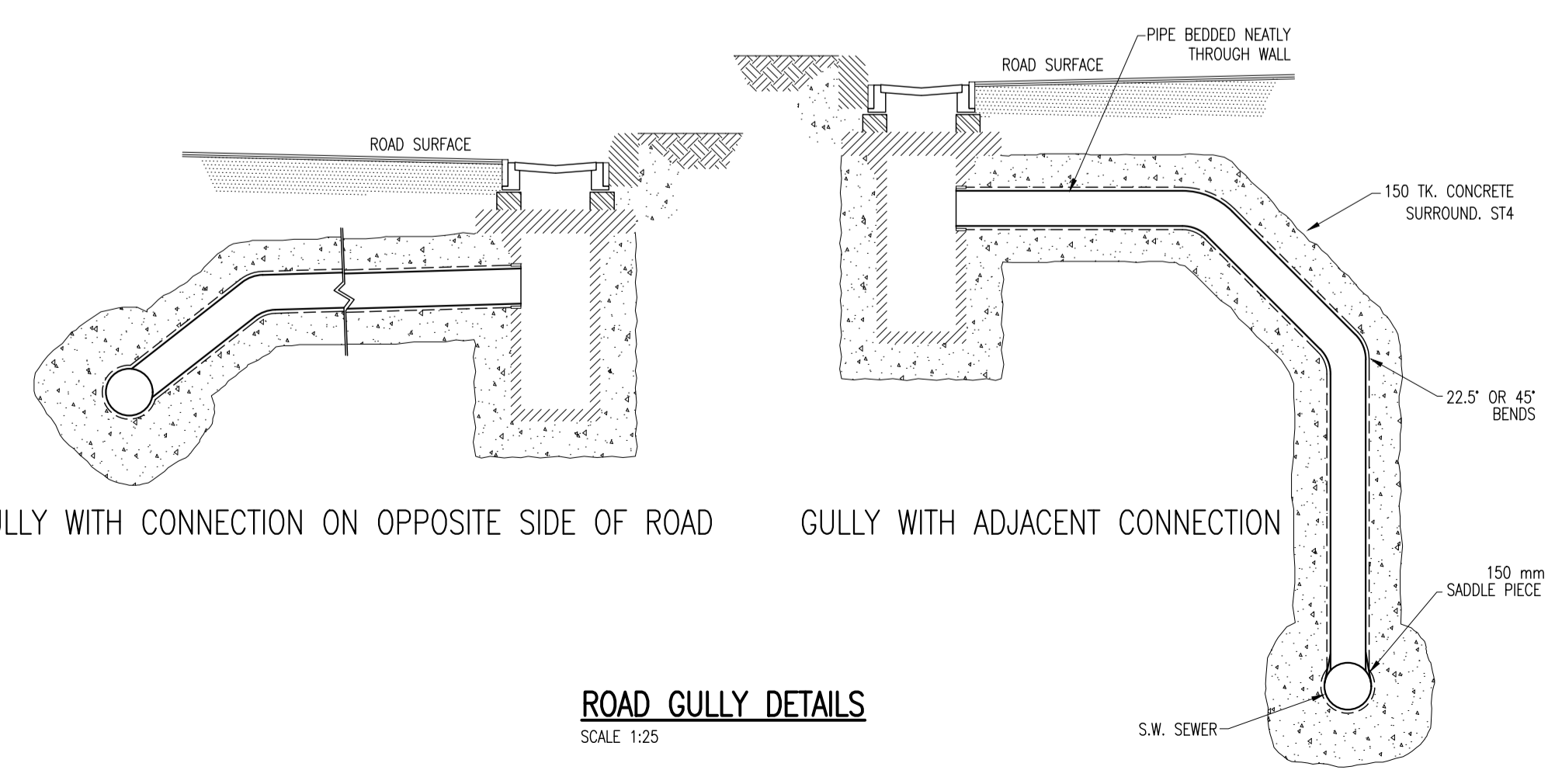
NOTE: FOR TRENCH BACKFILL/REINSTATEMENT DETAIL IN EXISTING ROADS REFER TO DRAWING 064011-3155



GULLY WITH CONNECTION ON OPPOSITE SIDE OF ROAD



ROAD GULLY DETAILS SECTION



GULLY WITH ADJACENT CONNECTION

ROAD GULLY DETAILS SCALE 1:25

P02	23-02-22	Formal Submission	PLY	NOH
P01	21-01-22	FOR PLANNING	PLY	NOH
rev	date	description	by	chkd.
		A - Approved		
		B - Approved with comments		
		C - Do not use		

client approval

submittal S2 - INFORMATION PLANNING

DBFL Consulting Engineers
Civil, Structural & Transportation Engineering
www.dbfl.ie

DUBLIN OFFICE: Ormond House, Upper Ormond Quay, Dublin 7, D07 W704
PHONE: +353 (0) 1 400 4000
CORK OFFICE: Phoenix House, Mahon Road, Cork, T12 H1KX
PHONE: +353 (0) 21 2054538
WATERFORD OFFICE: Suite 10 The Atrium, Maritime Gate, Canada Street, Waterford, X91 W028
PHONE: +353 (0) 51 309 500

project ref. RESIDENTIAL DEVELOPMENT AT SHACKLETON ROAD, BALLYMAKELLY UPPER, CELBRIDGE, CO. KILDARE
drawing title SURFACE WATER TYPICAL CONSTRUCTION DETAILS
client GLENVEAGH HOMES LTD
designed by NOH
author PLY
scale AS SHOWN
sheet size A1
drawing no. 200114-DBFL-SW-SP-DR-C-5302
revision P02